

Communications Plan for Activation & Notification of Ramona Area CERT and Utilization of Amateur Radio Communicators.

April 17, 2014

Prepared by Don Scott, Barry Davis

Introduction

This document describes the action plan for Ramona CERT and 2-way communicators in the event of an emergency or disaster in the Ramona, CA area. Two groups have been identified as possessing the equipment and skills necessary to implement effective 2-way communications and Emergency or Disaster Response services in the Ramona area in the event that other methods are ineffective as a result of an emergency or disaster.

CERT – Community Emergency Response Team members

ROARS – Ramona Outback Amateur Radio Society members

In some case an individual may belong to both groups.

In this document, the term *net* is used to describe a network of communicators. In the case of an emergency or disaster, the nets described herein use voice over 2-way radios. Other communications technologies may also be available and will be used as appropriate.

This plan is organized into four sections: activation procedures, radio information, procedural documents and a confidential section contain g personnel contact information.

1. Activation Procedures

Ramona CERT and Volunteer communicators can be utilized, directed to an EVC (Emergency Volunteer Center Registration Point) or activated by direction of the incident commander i.e. The Local Sponsoring Agency as noted below in the San Diego County Office of Emergency Services Activation Procedure:

Activation Procedures:

All registered San Diego County OA DSW volunteers must be officially activated by his or her Local Sponsoring Agency (LSA) before carrying out any disaster service activities. Official activation is a requirement for the DSW volunteer to receive the benefits and protections of the DSWVP.

The Local Sponsoring Agency will be responsible for documenting DSW volunteers' activation, disaster service activities, and demobilization. Additionally, upon activating a DSW Volunteer Program, the Local Sponsoring Agency must contact OES and report the following:

- On whose authority the DSW Volunteer Program is being activated
- Activation date and time
- Anticipated disaster service activities
- Expected demobilization timeframe

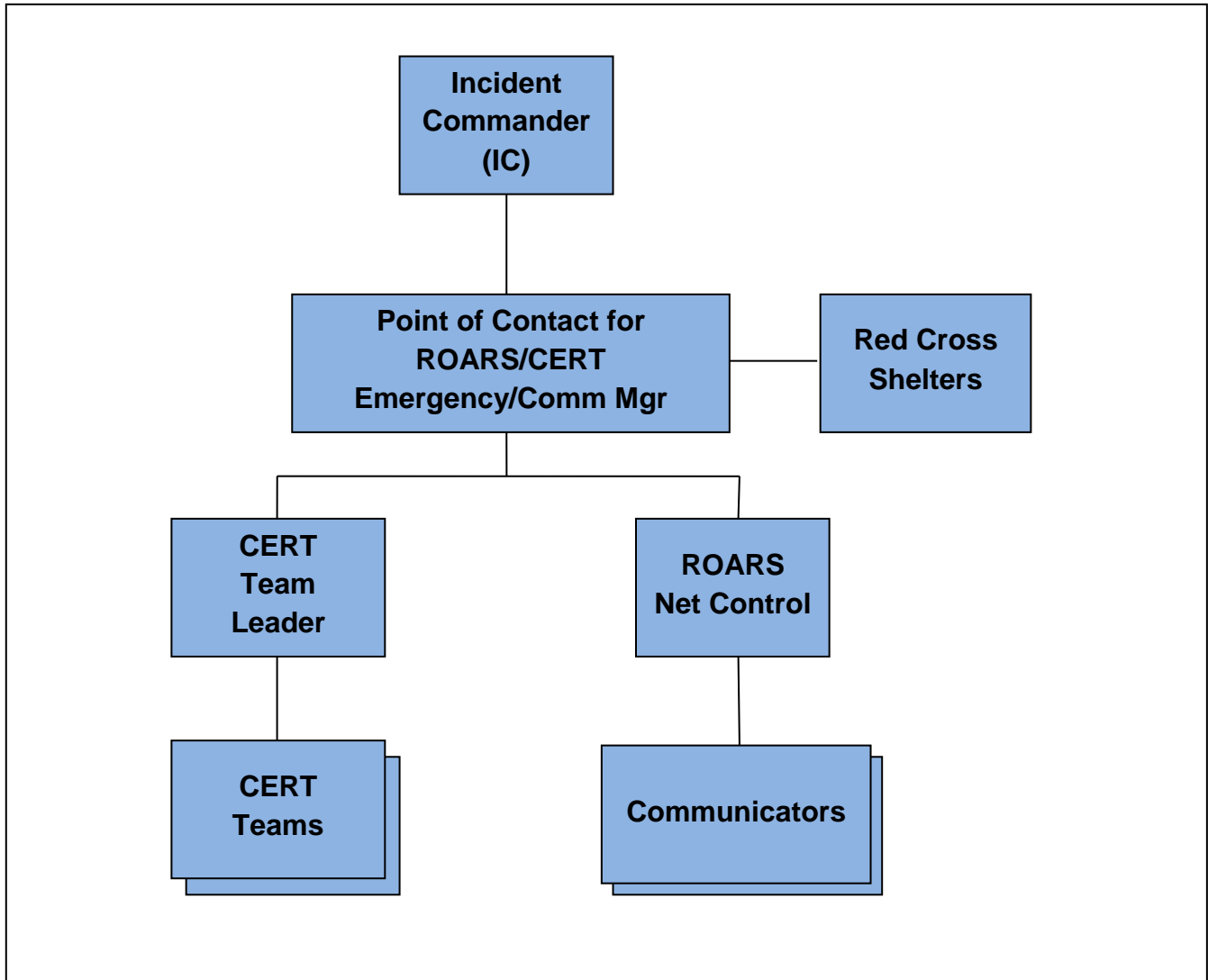
OES can be contacted via:

- Email: oes@sdcounty.ca.gov
- Telephone: (858) 565-3490

A point-of-contact (POC) will be identified (see personnel section below) and will be responsible for activating Ramona CERT and or utilizing the amateur radio net and Family Radio Service (FRS) net. Both nets are expected to be activated due to the limited direct radio coverage in the Ramona area due to the geography. Most ROARS communicators also have FRS equipment. Roars Communicators are skilled at passing traffic between nets.

1.1. Cellular Phone, Text Messaging

Many people have cellular phones which allow text messaging. Text messaging is an effective method for notifying ROARS and CERT personnel. Text messages are stored and forwarded to cellular phones when they are connected to the network. Thus text messaging effectively replaces the need for pagers. Ramona Fire department / Cal Fire can use text messaging to notify ROARS and CERT personnel as needed.



2. Radio Information

This section describes the methods used by various government agencies and the general public for communications in the event of an emergency. Radio channel or frequency information is provided so that scanners or general purpose receivers can be used by the general public.

2.1. Commercial Radio Broadcast Information

The primary Emergency Alert System (EAS) broadcast station in San Diego is KOGO, 600 KHz on the AM broadcast band. Other radio and TV stations may also rebroadcast emergency alerts.

2.2. Family Radio Service Information

The Family Radio Service is an unlicensed (citizen's band) 2-way radio service. FRS channel 1 is the national emergency frequency, 462.5625 Mhz. Citizens can tune into FRS channel 1 for Information or to communicate with the net control during an emergency. Section 3.3 provides an example of the information you should hear on an FRS radio during an emergency.

Many FRS radios have privacy codes or interference eliminator codes. If you have these codes enabled, then you may not be able to hear the emergency traffic or information on FRS channel 1. Use FRS Channel 1 with NO Privacy Code. Consult your radio instructions to determine how to disable privacy codes.

There are many locations in the Ramona area where FRS radios cannot be used to communicate with other areas. In general, FRS radios work well for line-of-sight communications. You may have difficulty with FRS reception if you are in a low spot or canyon. For best results, always keep your radio in an upright position with the antenna pointing skyward. See section 2.4 for a chart showing 2-way radio coverage for the Ramona area.

2.3. Amateur Radio Equipment Information

ROARS operates and maintains the following radio communications facilities. Unless otherwise noted, frequency modulation (FM) is used.

Description	Frequency (Mhz)	Offset	PL Tone	Power Supply	Notes
2-meter repeater 924 Etchvery Street, Ramona	145.300	-600Khz	88.5 hz	SDGE, battery, solar	
70 cm repeater 924 Etchvery Street, Ramona	445.760	-5Mhz	88.5 hz	SDGE, battery, solar	Echolink internet link capable
APRS digipeater Julian, CA	144.390	-	-	Battery, solar	

Other local amateur radio equipment frequently used by ROARS members in the Ramona area.

Description	Frequency (Mhz)	Offset	PL Tone	Power Supply	Notes
2-meter repeater Mount Palomar	147.030	+600Khz	103.5 hz	SDGE, battery,	Owned by ECRA, excellent coverage of the back country, national Weather Service net
2 Meter repeater Mt. Woodson	145.180	-600Khz	107.2	SDGE	W6HDC Repeater Owner
National simplex frequency	146.520	none	none	Not applicable	Difficult to provide coverage in many locations in the area. Repeaters are preferred. See section 3.4

2.4. Ramona Area VHF Simplex Coverage

This chart shows the coverage for 2-way VHF (2-meter) in the Ramona area.

	Fire Station 80	Fire Station 81	Fire Station 82	CDF 16310 Hwy 67	CDF Ramona Airport	S.D. Sherriff	USFS Goose Valley	James Duke Elem	Olive Pierce School	Ramona Elem	Mt. Woodson Elem	N. County Health Svc	SDCE Stores	Ramona Community Ctr	Hwy 78 & Weekend Villa	Dos Picos Park	San Vicente & wildcat Cyn	Old Julian & Vista Ramona	Delamo & Rutherford	Ramona Oaks & Tranquility	Fernbrook	243xx Watt Rd SDCE	Julian Township
Fire Station 80	☐	☐	☐	●	-	-	●	?	?	●	?	?	?	●	?	?	●	●	☐	☐	-	●	●
Fire Station 81	☐	☐	☐	☐	●	●	●	●	?	●	●	?	?	●	?	?	●	●	☐	☐	●	●	●
Fire Station 82			☐	☐	●	●	●	●	●	●	●	●	●	●	●	●	●	●	☐	☐	●	●	●
CDF 16310 Hwy 67				☐	●	●	●	●	●	●	●	●	●	●	●	●	●	●	☐	☐	●	●	●
CDF Ramona Airport					☐	●	●	●	●	●	●	●	●	●	●	●	●	●	☐	☐	●	●	●
S.D. Sherriff						☐	●	●	●	●	●	●	●	●	●	●	●	●	☐	☐	●	●	●
USFS Goose Valley							☐	●	●	●	●	●	●	●	●	●	●	●	☐	☐	●	●	●
James Duke Elem								☐	●	●	●	●	●	●	●	●	●	●	☐	☐	●	●	●
Olive Pierce School									☐	●	●	●	●	●	●	●	●	●	☐	☐	●	●	●
Ramona Elem										☐	●	●	●	●	●	●	●	●	☐	☐	●	●	●
Mt. Woodson Elem											☐	●	●	●	●	●	●	●	☐	☐	●	●	●
N. County Health Svc												☐	●	●	●	●	●	●	☐	☐	●	●	●
SDCE Stores													☐	●	●	●	●	●	☐	☐	●	●	●
Ramona Community Ctr														☐	●	●	●	●	☐	☐	●	●	●
Hwy 78 & Weekend Villa															☐	●	●	●	☐	☐	●	●	●
Dos Picos Park																☐	●	●	☐	☐	●	●	●
San Vicente & Wildcat Cyn																	☐	●	☐	☐	●	●	●
Old Julian & Vista Ramona																		☐	☐	☐	●	●	●
Delamo & Rutherford																			☐	☐	●	●	●
Ramona Oaks & Tranquility																				☐	☐	●	●
Fernbrook																					☐	☐	●
243xx Watt Rd SDCE																						☐	●
Julian Township																							●

Key: -- no direct communication possible
☐ communication barely possible, open squelch required
● communication possible, readable but weak
⊕ strong signal
? unknown, at this time

3. Procedures

3.1. Net Activation Procedure

1. In the event of unusual weather or any other emergency, it is requested that all CERT and ROARS members use the ROARS 2-meter repeater (145.300 Mhz, -600 Khz offset, 88.5 PL tone) and attempt to contact net control.
Monitoring the Family Radio Service channel 1 (no PL or privacy tones) is also recommended. Monitoring the ECRA Mount Palomar 2-meter repeater (147.030 Mhz, +600 Khz offset, 103.5 PL tone) as well as the Mt. Woodson 2 meter Repeater (145.300 – 600 Khz 107.2PL Tone) is also recommended.
2. If there is no directed net operating, use the net control script and procedures to establish a directed net.
 - Net control script is in a later section.
 - Indicate the reason for the net activation
 - Call roll of ROARS or Ramona CERT personnel
 - Maintain list of check-ins, check-outs, and time
 - Assist in passing traffic
 - Maintain control of net frequency use
 - Prioritize emergency or priority traffic
 - Assign assistant net control operators as needed
3. Maintain efficient operation of the net as needed

3.2. Amateur Radio Net Control Script

The following script can be used by a licensed amateur radio operator to begin a net during an emergency or disaster situation. This net may be started on one of the frequencies listed in section 2.3 and anyone can listen to the net on those frequencies.

Attention. Attention. This is [callsign and name] calling the Ramona Outback Amateur Radio Society emergency services net on [date] at [time]. We will be using this frequency for emergency communication and notification. This is [an actual emergency or drill].

This is a directed net. Please make no transmissions unless called upon by the net control station. Emergency traffic may break into this net at anytime and will be acknowledged by net control.

Standby for important information. [indicate the nature of the emergency and repeat any authoritative information as requested by government agencies].

We will now begin by taking check-ins by roll call.

We now accept other check-ins.

We will now accept volunteers to act as assistant net control.

We will now accept announcements, queries, or other business for the net.

Periodically, perhaps every 5 minutes or so, please repeat the information on the emergency and remind listeners that the net is in session.

3.2. *Amateur Radio Net Control Script Continued*

Attention. Attention. This is [callsign and name] calling the Ramona Outback Amateur Radio Society emergency services net on [date] at [time]. We will be using this frequency for emergency communication and notification. This is [an actual emergency or drill].

This is a directed net. Please make no transmissions unless called upon by the net control station. Emergency traffic may break into this net at any time, and will be acknowledged by net control.

Standby for important information. [indicate the nature of the emergency and repeat any authoritative information as requested by government agencies].

We will now accept announcements, queries, or other business for the net.

This net will conclude as requirements dictate.

3.3. *FRS Net Control Script*

The following script can be used by an amateur radio operator or CERT member to begin a Family Radio Services (FRS) net during an emergency or disaster situation. The Main Purpose of the Family Radio Service Net is to establish some form of Communications with the members of the community. Much Valuable information pertaining to an emergency could be gained and used in responding to the needs of the Community. Follow the local protocol and procedures for utilization of this information.

Attention. Attention. This is [name] calling the Community Emergency Response Team emergency services net on [date] at [time]. We will be using Family Radios Services Channel 1 for emergency communication and notification. This is [an actual emergency or drill].

This is a directed net. Please make no transmissions unless called upon by the net control station. Emergency traffic may break into this net at any time, and will be acknowledged by net control.

Standby for important information. [indicate the nature of the emergency and repeat any authoritative information as requested by government agencies].

We will now begin by taking check-ins by roll call of CERT members.

We now accept other check-ins.

We will now accept volunteers to act as assistant net control. This is important for the Family Radio Services because it is difficult to cover all areas of Ramona from a single transmitting location. If you would like to be an assistant net control station, please call now by stating your name and approximate location.

We will now accept announcements, queries, or other business for the net.

Periodically, perhaps every 5 minutes or so, please repeat the information on the emergency and remind listeners that the net is in session. This periodic information should be repeated by all assistant net control stations in turn.

3.3. FRS Net Control Script Continued

Attention. Attention. This is [name] calling the Community Emergency Response Team emergency services net on [date] at [time]. We will be using Family Radios Services Channel 1 for emergency communication and notification. This is [an actual emergency or drill].

This is a directed net. Please make no transmissions unless called upon by the net control station. Emergency traffic may break into this net at any time, and will be acknowledged by net control.

Standby for important information. *[indicate the nature of the emergency and repeat any authoritative information as requested by government agencies].*

We will now accept announcements, queries, or other business for the net.

This net will conclude as requirements dictate.

4. Red Cross Shelter Communications

The Red Cross often uses amateur radio communicators when staffing emergency shelters. Amateur radio operators who are at shelters are encouraged to check-in with the shelter staff and identify the communications capabilities at the shelter.

The Amateur Emergency Radio Services (ARES) is often used to staff emergency shelters. The Ramona area ARES emergency coordinator is accessible via the ROARS point of contact.

- end of public section -

5. Personnel [Confidential Section]

This section lists the contact information for personnel who have agreed to be called upon in case of emergency.

5.1 ROARS Personnel [Confidential Section]

<i>Name</i>	<i>FCC Call sign</i>	<i>Title or Position, Address</i>	<i>Phone</i>	<i>ARES</i>	<i>CERT</i>	<i>FRS</i>	<i>Emerg Pwr</i>	<i>Mobile</i>	<i>Data Validation Date</i>
John German	W6IET EXTRA	710 progress Ln. Ramona, Ca	858-922-6438						6-2015
Steve Stipp	KK6AHB EXTRA	813 PINE ST. Ramona, Ca	760-788-2012						6-2015
Al Hove	KK6MVQ GENERAL	316 G ST. Ramona, Ca	619-203-4463						6-2015
Chris Yanez	TBD	1818 El Cajon Ln. Ramona, Ca	760-803-7163						6-2015
Dan Nixon	KE6YKR GENERAL	1343 Olive St. Ramona, Ca	619-993-3544						6-2015
Ken Donham	KR6BG EXTRA	24730 Watt St. Ramona, Ca	760-789-5192						6-2015
Brian Six	AG6RJ EXTRA	16868 Sky Vly Dr. Ramona, Ca	858-699-8701						6-2015

5.2 ROARS Personnel [Confidential Section] Continued

<i>Name</i>	<i>FCC Call sign</i>	<i>Title or Position</i>	<i>Phone</i>	<i>ARES</i>	<i>CERT</i>	<i>FRS</i>	<i>Emerg Pwr</i>	<i>Mobile</i>	<i>Data Validation Date</i>
]						

5.2 CERT Personnel [Confidential Section]

Name	FCC Call sign	E-Mail	Phone	Duty Section	CERT Training Date	Data Validation Date
Don Scott	KF6AUP WQDS790	radiocreations@cox.net	(760) 315-2879 [C] (760) 788-6932 [H]	1 <i>DS Leader</i>	May 2005	Apr 2014
Michelle Scott	KG6ODJ WQDS790	Meeshell2@juno.com	(760) 315-2879 [C] (760) 788-6932 [H]	1	May 2008	Apr 2014
Dave Smith	<i>n/a</i>	-	(760) 315-1703 [C] (760) 789-3658[H]	1	May 2005	Apr 2014
Rosalinda Stevenson	KI6WVA	Rsteve9904@aol.com	(760) 500-1061[C] (760) 788-6208 [H]	1	May 2008	Apr 2014
Joe Flynn	<i>n/a</i>	jobcatjoe@hotmail.com	(760) 420-7930 [C]	1	Mar 2011	Apr 2014
Barry Davis	KI6SRC WQJY620	bdavis@hme.com barry_davis@cox.net	(760) 415-0349 [C] (760) 789-2428 [H] (858) 535-6117 [W]	2 <i>DS Leader</i>	May 2008	Apr 2014
Kristi Mansolf	KI6WWD	kmansolf@gmail.com	(760) 445-8545 [C] (760) 789-7502 [H]	2	May 2005	Apr 2014
Bruce Jenkins	<i>n/a</i>	bjaragorn@gmail.com	(760) 419-0787 [C]	2	Feb 2013	Apr 2014
Paul Stein	KG6PRF	Paul.stein@natuniv.edu	(760) 505-2596 [C] (760) 788-6374 [H]	2	Nov 2005	Apr 2014
Teresa O'Donnell	<i>n/a</i>	amerirish1@yahoo.com	(760) 533-0495 [C]	3 <i>DS Leader</i>	Mar 2011	Apr 2014
David Bowe	KI6ONH WQIN918	davbonbowe@cox.net	(760) 525-0245 [C] (760) 787-9307 [H]	3	May 2005	Apr 2014
Michael Simone	<i>n/a</i>	masimone77@hotmail.com	(619) 312-5370 [C]	3	Feb 2008	Apr 2014
Jan Ophof	KK6GHC	Jan.E.M.Ophof@gmail.com	(215) 284-3258 [C]	3	Jun 2013	Apr 2014

5.2 CERT Personnel [Confidential Section] Continued

<i>Name</i>	<i>FCC Call sign</i>	<i>E-Mail</i>	<i>Phone</i>	<i>Duty Section</i>	<i>CERT Training Date</i>	<i>Data Validation Date</i>
Philip Savage	KI6WVV WQJY626	wycckthenav@earthlink.net	(760) 315-2349 [C] (760) 789-1170 [H]	4 <i>DS Leader</i>	May 2008	Apr 2014
Russell Shankle	KJ6STY WQOM919	rshankle@cox.net	(619) 985-9541 [C] (760) 788-9541 [H]	4	Aug 2011	Apr 2014
Margaret Shankle	KJ6SUD	m.shankle21@hotmail.com	(619) 952-8539 [C] (760) 788-9541 [H]	4	Aug 2011	Apr 2014
Martha Shankle	<i>n/a</i>	rshankle@cox.net	(619) 985-9543 [C] (760) 788-9541 [H]	4	Jun 2012	Apr 2014
Paul Niswonger	<i>n/a</i>	pderekn@msn.com	(858) 864-2943 [C] (760) 440-9409 [H]	4	Feb 2013	Apr 2014
		N/A				
		N/A				